

THE VIREO GROUP™



Highway 25, Edgefield, SC 29824

Latitude 33.53448
Longitude -81.98728
Tax Map 138-00-00-058-000



Highway 25, Edgefield, SC 29824

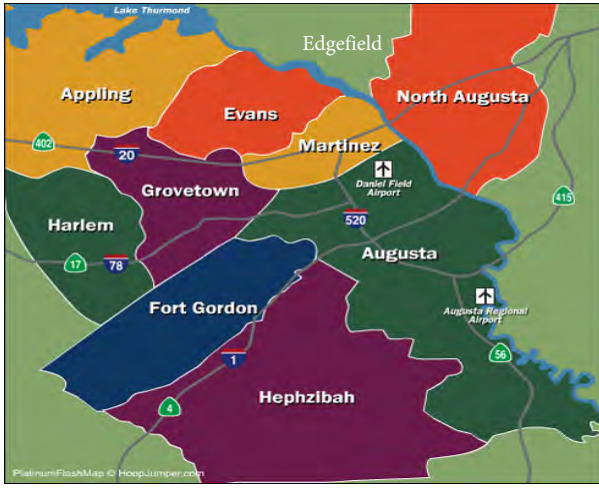
Latitude 33.53448
Longitude -81.98728
Tax Map 138-00-00-058-000

Copyright © 2010 qPublic.net



720 St. Sebastian Way, Suite 4
Sutherland Mill
Augusta, GA 30903
www.thevireogroup.com

For Information Contact:
Julie Teague, CPM, CCIM, LEED GA
706.426.4150
julie@thevireogroup.com



EDGEFIELD OVERVIEW

Located on the Georgia/South Carolina border, Edgefield is across the river from Augusta, Georgia. Augusta is the center point of the CSRA (Central Savannah River Area), a 13 county region that includes Georgia and South Carolina. The city's famous golf course, the Augusta National Golf Club, hosts the first major golf tournament of each year, The Masters. Edgefield has been the home to ten South Carolina governors and well as the oldest and longest serving U.S. Senator in American History, U.S. Senator Strom Thurmond. Major highways of Interstate 20 and Interstate 520 serve the region along with Hwy. 25 to Greenwood and Greenville, SC with ease of access to major cities such as Atlanta, Columbia and Charlotte.

BUSINESS & INDUSTRY

Medical District of Georgia	25,000
Fort Gordon	9,844
Savannah River Site	12,000
Augusta University	4,656
Edgefield County	860
The National Turkey Federation	125

* source Edgefield Chamber of Commerce

EDUCATION

- * Higher Education: Augusta University, Augusta Technical College, USC - Aiken, Aiken Technical College, Paine College and Georgia Military College.
- * 1 Private Schools serving 168 students
- * 9 Edgefield County Public Schools serving 4,000 students

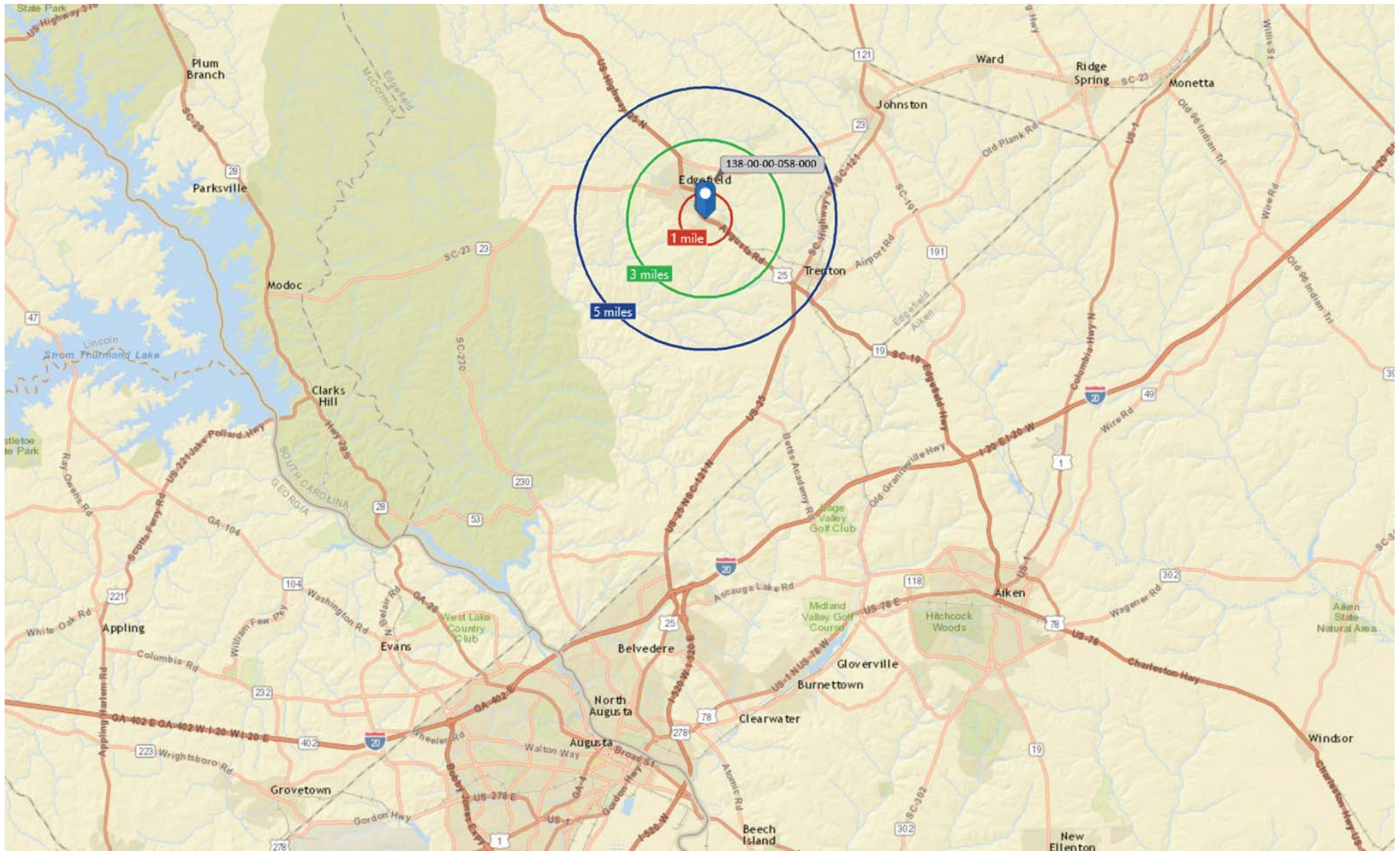
* source Edgefield County Schools



Demographics	1 Mile	3 Mile	5 Mile
2015 Population	2,717	5,850	7
2015 Median Age	39.5	39.8	40.1
2015 Households	280	1,523	2,131
2015 Average Household Income	32,261	44,460	48,401



EDGEFIELD COUNTY MSA



1, 3, 5 Mile Map

The Augusta-Richmond County, GA-SC Metropolitan Statistical Area, comprising Richmond, Burke, Columbia, and McDuffie Counties in Georgia and Aiken and Edgefield in South Carolina. As of the 2010 Census, the area had a population of 580,270.